



2007 ANNUAL REPORT



EDITORIAL

Children of the World – Human Rights (EMDH) added 2007 to its 22 years of existence. Field programs were consolidated and more than 25,000 children were taken into care by the 700 employees involved on a daily basis with EMDH's 12 missions.

EMDH continued its transition at the organisational level, consisting of regionalisation and professionalisation policies for support services. These stages are indeed essential to deal with issues related to the evolution of humanitarian work. Thanks to methodological and rigorous work, the Accounting-Finance Service generated genuine steering tools, which enabled us to offer the visibility necessary for decision-making and to reinforce our transparency capacities. For its part, the Human Resources Service was able to develop its recruitment requirements, beneficial staff training, and the addition of Volunteer of International Solidarity careers and began implementing a real HR policy that is suitable to the nature of our business. Lastly, the Communication and Development Service expanded, in particular due to the introduction of unpaid and trainee workers with unique skills, and was therefore able to put the organisation's status and image to better use; engage in intense talks with players in the private sector.

Nevertheless, and in spite of this rationalisation of methods and organisation of the structure, which will bear fruit in the near future, EMDH has to face the current difficulties with which NGOs "on a human scale" are confronted. Co-financing shares continue increasing while government grants are fewer with higher costs. Consequently, the equities that NGOs must bring in are increasingly important. It is a premium to large structures that we might regret, but is an evolution to which we must adapt.

The requirement and originality of our intervention methodology is based on "the comprehensive care for a child's needs" which EMDH primarily focuses on to intervene on a dimension, too often forgotten, of the need for psychological support for children. Faced with the trauma that they have suffered or experienced, children cannot remain alone and food distribution or medical care is necessary, but not enough. Nevertheless, major funders continue to prefer for their actions to be more visible (food distribution, building restoration, medical care...). EMDH was nevertheless highly mobilised. All re-financing has been honoured and social tasks that are the core of our business, and our *raison d'être*, have been carried out.

In this context, EMDH's goals for 2008 are primarily oriented towards achieving financial stability. This is so that the association can rationalise its costs and - 2007 having confirmed the urgent need - to further the search for equity. This is a requirement to ensure the sustainability of our field programs and to continue to promote children's rights wherever they are violated. From this standpoint, 2008 will also be a planning time with administrators, team members, and EMDH players to gather around the associative project based on our mandate: "recognition of the child's personality and all related human rights." The mandate formalises, beyond our humanitarian work, a revolutionary vision of what we want for the world's children.

1. Who are we? EMDH Overview

Founded on February 4, 1986, Children of the World – Human Rights acts to protect at risk children and to promote their rights. It bases its work on the International Convention on the Rights of the Child (CRC) adopted by the UN General Assembly on November 20, 1989. It strives to raise public awareness of this convention but also works to have it enforced in France and abroad. EMDH is an original combination, between human rights organisation and a humanitarian association.

Present in 12 countries in 2007, in particular EMDH leads socio-educational activities and provides psychological support



to the most vulnerable children and their families. There are 25,556 children who have directly benefited from the activities established by the association.

EMDH is independent of any political or religious affiliation. Our work includes taking a stance on international opinion. It defends all children, whoever they are, acting on the fundamental values recognised by the CRC: the right to life, the right to an identity, the right to education, or the right to leisure and play.

EMDH is a non-profit association governed by the law of 1901, with special consultative status with the UN Economic and Social Council (ECOSOC). It is bound by various partnership agreements signed with the European Union (ECHO Europaid...), French Ministry of Foreign Affairs, French Ministry of Education and various UN agencies such as UNICEF and the World Food Program... In 2004, EMDH was awarded the French Republic's Human Right Prize.

On December 31, 2007 EMDH had 600 domestic employees, 30 Volunteers for International Solidarity and expatriate staff, supported by 13 employees and dozens of interns and volunteers at our headquarters.

Activities

In 2007, EMDH was present in 12 countries in Europe (France), Asia (Afghanistan, Burma, Sri Lanka, Vietnam), Africa (Algeria, Madagascar, Sudan) and the Middle East (Lebanon, Iraq, Palestinian Territories, Yemen).

EMDH implemented a comprehensive approach to caring for children. Beyond the essential medical and practical support that children require, EMDH assists the most vulnerable children to build and rebuild a better future. Children of the World teams are carrying out development missions (human and socio-economic) through psychosocial and socio-educational activity programs more closely tailored to the needs of beneficiaries.

- **Psychosocial activities**

The children supported by EMDH need to express their experiences, to externalise their feelings. They need specialised listening adapted to helping them overcome the suffering caused by the traumatic experiences they have endured. EMDH teams implement group activities (games, sports, crafts, etc...). They provide an opportunity to identify children with behavioural problems and the most severe injuries requiring an individualised follow-up.

- **Socio-educational activities**

A priority for acquiring social skills is boosting the abilities, imagination, and curiosity of children who have suffered trauma and/or are living in a difficult situation. EMDH sets up secure areas, protected from various dangers associated with crisis situations (abductions, cluster munitions, natural disasters, etc...), where organised recreational and educational activities (elementary teaching, tutoring, professional training, artistic activities, sports and arts & crafts).

2. Operations

Throughout 2007, EMDH strengthened its presence in areas where the association was already present. This well thought out development has not seen a major increase in the number of activities but rather through better qualitative analysis of our actions and a search for optimisation for resources already in place.

Different aspects for analysis were established: project quality, quality of co-ordination with different field player, homogenisation of national and regional level programs... and EMDH teams have sought to set up effective and efficient regional co-ordination. The first of these was established in Amman, Jordan, covering all Middle Eastern countries (Iraq,



Yemen, Palestine, and Lebanon). This enabled development of an evaluation mission in Syria, which should lead to setting up an office and starting a program in Damascus in 2008.

In Asia and Africa EMDH prepared for the opening of two regional co-ordination offices (Bangkok-Thailand and Khartoum-Sudan), which should also be realised in 2008.

Our work among children has been significantly strengthened in terms of quality particularly due to our domestic teams and volunteers/expatriate employees. Their commitment and continual desire to bring ever more to children have helped to strengthen and improve our work for the most vulnerable children. This includes greater consistency between child protection and advocacy work. EMDH wishes to focus primarily on defending the International Convention on the Rights of the Child and denounce all forms of child abuse. This is and will remain the driving force behind our commitment and our work!

This year has also been a year of becoming open to other possible activities, in other parts of the world. To do this we carried out various exploratory missions: in Haiti, where the first EDMH mission was held 20 years ago, but also in the DRC where children are still under threat. Finally, from a regional coherence point of view, it seemed important to assess the possibility of intervening in Syria where the number of Iraqi refugees remains high and where international aid arrives sparingly.

Thanks to the investment from all the teams, 2007 helped to prepare the best qualitative and quantitative development of our work, for the most vulnerable.

2.1 Africa

2.1.1 Algeria

Algeria ratified the International Convention on the Rights of the Child on April 16, 1993.

Key figures

56 direct child beneficiaries
No Volunteers for International Solidarity
No domestic employees
EMDH has been present in Algeria since 2002

Geopolitical and social background

In Algeria, the birth of children outside marriage remains taboo. However, it is estimated that 87% of the 3,000 children abandoned each year are newborns born out of wedlock. In most cases, these are children of young single mothers who declare their willingness to give them up at birth, placing them under the guardianship of the State. The Law provides for a reflection period of three months and one day before the child can be placed in Kafala (the adoption system under Muslim law).

In general, the care of children during this period is very limited and poorly adapted to their needs. Because of an insufficient number of specialised organisations, many of the children remain in paediatric or maternity hospitals, without individual attention. Sometimes the children are placed in homes before the end of the statutory reflection period.



EDMH intervention background

To address this situation, the Association for Child and Volunteer Foster Families (AAEFAB) opened a nursery association in 1987, providing specialised care. A second structure was created the following year. The nurseries are located in Hadjout and Palm Beach providing shelter to abandoned children at birth. They provide support to biological mothers and parents wishing to "adopt" a child.

EMDH, in association with CEMEA (Progressive Education Promotion Centres) and Santé Sud, provides support to the Hadjout nursery, and organisational coaching and teaching for the AAEFAB so that it can improve and broaden its practices.

Program to improve the care of young children and establishment of a Mediterranean Early Childhood Institute

*Algiers and surrounding region
Since November 2002
Support for early childhood*

In 2007, the program enabled 56 infants to be taken into care and placed with families. Twelve "lullabies", young Algerian women who work with infants, followed the continuing education program in eight Algerian nurseries. Finally, the early childhood specialist network benefited from a resource centre in Algiers.

Description of work

- In the nurseries, the work implemented is designed to promote quality care for abandoned children, providing attentive listening and assistance to mothers in difficulty and to assist adoptive parents.
- In 2007, the consortium between EMDH, CEMEA, and Santé Sud has continued to develop activities for the Training Centre, founded in 2000. The centre aims to teach care methods for professionals in direct contact with children. It includes setting up skills training leading to a State diploma, granting professional recognition as "lullabies".
- The Mediterranean Early Childhood Institute Resource Centre, inaugurated in November 2006, essentially has two goals. One is to educate public and health professionals on how to meet the basic needs of young children, and secondly to create a place to cater for students, researchers, and professionals working with children. This resource centre aims to become a reference point for early childhood and prevention and care of abandoned infants in Algeria. The goal is to offer quality information on issues related to early childhood as well as a space for meeting and exchanges with professionals caring for children from both sides of the Mediterranean.

Technical Partners

AAEFAB
CEMEA, Progressive Education Promotion Centres
Santé Sud

Institutional partners

DAS Algeria
Algerian Ministry of National and Family Solidarity

Financial Partners

French Ministry of Foreign Affairs



UNICEF
Algeria Children's Group
North-South Institute of Pisa
Terre des Hommes – Lausanne
Solidarité Laïque

2.1.2. Madagascar

Madagascar ratified the International Convention on the Rights of the Child on March 19, 1991.

Key figures

1,850 child beneficiaries
1 Volunteer of International Solidarity (VSI)
28 domestic staff
EMDH has been present in Madagascar since 1998

Geopolitical and social background

The population of Madagascar faces growing misery because of the economic crisis and political tension. The country's economy is suffering from the effects of globalisation and even the greatest companies cannot compete with competition from Asia in general, China in particular. Madagascar's government fails to effectively fight against corruption, which undermines the functioning of institutions and finds the authoritarian attitude of former regimes. Education and health are, after the police and legal system, the most corrupt.

Hygiene, health, social prevention, and public security issues pose the greatest problems in the neighbourhood cities and in the bush.

More than 2 million children live without legal identity and are denied their basic rights. 60% of school children drop out during elementary school and most often will join the ranks of child workers. Child prostitution is growing at a very disturbing rate. In urban areas, the majority of young people is unemployed and survives by doing odd jobs. Crime increases.

EDMH intervention background

The association has been present in Madagascar since 1998. The mission is based in Mahajanga, located on the Northwest coast of the island where, a rural exodus promotes the development of residential areas outside of any planning laws. In poor neighbourhoods, small children are exposed to infectious diseases, while the older children drop out of school and have to work at a very young age, or are tempted by crime and prostitution.

Since 1998, the association has implemented a comprehensive program for children, which aims to support the work of local associations in the areas of education, welfare, and health. Since January 2006, the mission has also started a social and occupational program. This program strives to improve, through vocational training, the living conditions and skills of these young people, ages 16 to 26, living in disadvantaged areas of Mahajanga.



Comprehensive childcare program of in Mahajanga

Mahajanga

Since September 1998

Pre-school education, social preventing, mobilisation for child rights, youth job training

EMDH works with school age children in nursery school and elementary school as well as young people in difficulty. More than 1,850 children were cared for on a permanent basis through school activities and training. On the other hand, EMDH teams supported about 8,600 on an occasional basis through social aid, organisation of various activities, or assistance in obtaining copies of marriage papers. Elementary schools, training centres, and local associations benefit indirectly from the project.

Description of work

The first phase took place between 1998 and 2002. The results of the pilot project in 4 districts of Mahajanga have been extremely positive; EMDH implemented the second phase of the project in 12 neighbourhoods.

The work revolves around 5 components. **Social prevention** strives to prevent the phenomenon of street children through social work with children and families: identification of children facing the greatest difficulties, schooling, access to health (with emphasis on AIDS and STD prevention), nutritional support, setting up income generating activities with parents... In addition, care work and integration work for street children completes this component.

Mobilisation enables the development of a dynamic network for promoting children's rights and protecting of child victims of abuse. EMDH has actively participated in the creation of a chief association for the network, in charge of its guidance: the Children's Rights Collective (CDE), is now independent. Our current work is focused on the technical and organisational support of the CDE and its accompaniment with a view to sustainability.

The public records section deals with the problem of children who are not registered at birth and, therefore, cannot attend school or have access to healthcare and are extremely vulnerable to various forms of exploitation. EMDH won more than 25,000 substitute birth certificates in Mahajanga and the surrounding area, enabling children to enjoy their most fundamental right: to exist legally. Much remains to be done in this area, as more than 300,000 children still remain without legal existence in the province.

Vocational training targeted young people in great difficulty. The objective of this work is to enable them to pursue a remunerative occupation and to fight against social exclusion, crime, and prostitution.

Pre-school education fights against exclusion. Indeed, timely progressive schooling is the key to successfully integrating children into the school system and helps to fight against dropping out of school. Twelve pre-school centres catering for 720 children have been built since the program began. Educational support is provided in partnership with local public education. In addition, EMDH is implementing the rehabilitation of school libraries in public elementary schools.

Technical Partners

Children's Rights Collective (CDE)

Public schools

Local associations

Vocational training centres

Institutional partners

Mahajanga City Hall



Ministry of Education
Population Office
Labour Office

Financial Partners

EU WFD
EU EUROPAID

2.1.3 Sudan

Sudan ratified the International Convention on the Rights of the Child on August 3, 1990.

Key figures

11,400 child beneficiaries
1 expatriate employee and 10 Volunteers for International Solidarity (VSI)
284 national staff
EMDH has been present in Sudan since 1999

Geopolitical and social background

For over twenty years, from 1983 to 2005, Sudan has been engulfed in a civil war between the North and the South, which has claimed more than 2 million lives and displaced more than 5 million people. In January 2005, agreements were signed and offered hope of a more lasting peace. Nevertheless, the Southern part of the country is rebuilding itself with a new administration and virtually non-existent basic services. Nearly a half million people still depend on food aid and the population's health situation remains a concern.

Fighting began in 2003 in the province of Darfur, creating a new humanitarian crisis in the country. According to the UN, the fighting has caused between 100 and 200,000 deaths and displaced millions. Despite peace agreements with some rebel groups in May 2006, fighting and violence have continued throughout 2007. IDP camps have reached maximum capacity: the limit of 2 million people was surpassed in December 2006 and prospects for their return are still distant.

Furthermore, regional conflicts confronting Sudan for the past 25 years have led people to take refuge around Khartoum for security reasons or economic distress. The capital is home to more than 4 million displaced people living in camps or slums.

EMDH has supported children in Wau in Southern Sudan since 1999, in the Abu Shouk camp in Darfur since July 2004, and the displaced populations around Khartoum since 2003.

North Darfur - El Fasher

EMDH intervention background

EMDH is present in the Abu Shouk camp in North Darfur, one of the largest IDP camps in the region. In 2007, the camp reached maximum capacity with 60,000 displaced civilians. EMDH cares for and offers psychosocial support to children in difficulty, and assists communities in implementing social and educational services for children.



Psychosocial support program for children affected by war

*Abu Shouk IDP camp, El Fasher, North Darfur
Since July 2004
Support for displaced children*

The Abu Shouk camp accommodates people from North Darfur who have fled their villages because of fighting. Deprived of resources, they moved into the camp in July 2004 after a long period of wandering. The primary beneficiaries of the EMDH program are the camp's children, especially pre-schoolers and their families. There are 5,000 children under the age six, 350 children with psychological issues, 5,400 youths and 7,000 young women living in the camp that benefit from the work carried out by EMDH.

Description of work

EMDH set up and operates a network of 15 centres for children in Abu Shouk camp. Hundreds of community volunteers have been trained for to lead them. The centres cover the entire camp and support 230 pre-school aged children on a daily basis. They attend nursery classes in and take part in extracurricular activities. In addition, EMDH develops continuous health, nutritional, and social monitoring.

EMDH also oversees the camp reference centre for social and psychological care supporting 350 children per year; other international organisations manage medical care and nutrition. Meanwhile, a broad information program on children's needs and education practices is implemented throughout the camp. Finally, EMDH supports youth initiatives in distributing equipment for clubs.

Technical Partners

Action against Hunger
German Red Cross
Community Leaders

Institutional partners

Sudanese Ministry of Social Affairs
Sudanese Ministry of Education

Financial Partners

French Ministry of Foreign Affairs (MAIONG)
UNICEF
UNCHF
Tolkien Foundation

South Sudan - Wau

EMDH intervention background

Under a January 9, 2005 Agreement, Southern Sudan obtained a power-sharing and wealth and the local government now enjoys considerable autonomy. Formation, on September 20, 2005, of the National Unity Government and the



Southern Government and Parliament, are encouraging steps. But the economic and health situation remains particularly worrying in a region ravaged by years of conflict where everything needs rebuilding.

Vulnerable children support program

Wau Town

Since October 1999

Support and psychosocial care, protection, health, food security

EMDH works with vulnerable children in Wau: displaced children, orphans, street children, children in conflict with the law, and isolated children. There are 450 children in Wau, 400 women and 200 children in the Eastern Bank displacement camp and 26 organisations and 500 professionals support children from Western Bahr el Ghazal who benefit from its work.

Description of work

EMDH began working in Wau in the wake of the great famine of 1998. In 2007, work was organised around several axes.

A psychosocial day centre, which cared for children between ages 6 to 14 in precarious social situations, providing children with medical care, nutritional support, and social activities such as games, sports, as well as cultural and educational activities. The goal is to re-socialise marginalised children, and to reintegrate them into their communities through schooling. Support work and tutoring will accompany them in their new environment.

In the Wau prison, EMDH teams organise social monitoring of minors and female prisoners, and provide educational activities and games twice per week. Collaboration with Don Bosco allows minors to join the Vocational Training Centre during their detention. The team visits police stations in the city every morning to identify whether the arrests involve isolated children so that they can offer personal support.

Street children in the city markets are approached by EMDH social and medical workers and a relay is carried out in the psychosocial centre where children can freely go in the late afternoon. There they find a meal, they can bathe, participate in recreational and sports activities, and benefit from social support to facilitate their reintegration (schooling, vocational training, family mediation, at home support...)

Technical Partners

Don Bosco

Sudanese Ministry of Justice

Institutional partners

Sudanese Ministry of Social Affairs

Sudanese Ministry of Health

Sudanese Ministry of Education

Civil prison

Sudanese Ministry of Justice

Financial Partners

United Nations Common Humanitarian Fund (UNCHF)

World Food Program (WFP)

Agricultural training program for young women

Wau – Eastern Bank Displacement Camp



Since February 2007

Vocational training, food security, education

EMDH started a program in 2001 in the Eastern Bank displacement camp, to promote the integration of isolated and marginalised women outside the city (women leaving prison, unmarried mothers, divorcees, and widows). Extremely poor, the children suffer from malnutrition and many do not attend school. The program was based on empowering women through the allocation of agricultural gardens supported by training programs.

The pilot project was taken over by Women for Training and Promotion Organisation (WOTAP), a local partner organisation, and then expanded with the addition of community services (literacy, pre-school services) and the establishment of an agricultural co-operative to oversee management of the gardens and co-ordination of the agricultural training centre. This program is supported by the Ministry of Agriculture, which provides the land and technologically supports the program.

Technical Partners

Women for Training and Promotion Organisation (WOTAP)

Sudanese Ministry of Agriculture

Food and Agriculture Organisation of the United Nations (FAO)

Institutional partners

Sudanese Ministry of Social Affairs

Sudanese Ministry of Education

Sudanese Ministry of Agriculture

Financial Partners

French Ministry of Foreign Affairs

World Food Program (WFP)

Sudanese Ministry of Agriculture

Food and Agriculture Organisation of the United Nations (FAO)

French Embassy SCAC (FSD)

Rights of the child promotion centre

Western Bahr el Ghazal

Since January 2006

Skill building, child protection

Established after the signing of peace agreements, this program focuses on strengthening local abilities in terms of child protection (ministries, local organisations, and professionals working with children). If local staff is the direct beneficiary of this program, children in Wau and the surrounding villages are the ultimate beneficiaries.

Description of work

This is to provide local staff with a resource centre for promoting children's rights. The Centre is organised around several divisions "research and distribution" to raise awareness on the Rights of the Child and research support; the "resource" division for the provision of resource materials, and conference organisation; "training" to strengthen the skills professional working with children; "orientation" for the identification and co-ordination of services offered to children; and "support for local initiatives" for organisational and financial support to child protection projects.



In 2007, work carried out by the Rights of the Child Promotion Centre has focused primarily on educating girls, street children, and those in conflict with the law.

Technical Partners

UNICEF
UNMIS

Institutional partners

Sudanese Ministry of Social Affairs
Sudanese Ministry of Education
Sudanese Ministry of Justice

Financial partner

EU (EIDHR)
United Nations Common Humanitarian Fund (UNCHF)

Khartoum area

EDMH intervention background

January 2003: EDMH started a project in Shikan, a "squatter" area for those displaced by the war. This project is conducted in partnership with a national Sudanese organisation, Azza Women Association (AWA). A community centre was built: literacy, vocational training, support for the creation of income-generating activities, and primary health services.

In late 2004, the government decided to demolish Shikan: 12,000 people found themselves homeless in the middle of winter. People were driven to El Fateh, without any basic services. EDMH and AWA decided to redeploy their activities in the El Fateh area and opened a primary healthcare centre. Since then, homes have been built, but infrastructure is still precarious. In 2007, there were 22,500 families who were displaced from the South, Darfur, and the East settled in El Fateh. EDMH and AWA have rebuilt a community centre.

Program to improve access to primary healthcare and health education

El Fateh / Khartoum

Since August 2004

Healthcare specialised for women and children

The program targets 2,000 families in the temporary housing area of El Fateh (known as El Fateh 3). In fact, the centre receives patients from throughout the area who cannot access other subsidised care. 60% of the residents are children under the age of 15 (half of whom are under 5 years old). Among adults received, 75% are women. In total, 15,000 health consultations have been conducted in 2007 through this project.

Description of work

Consultations, examinations, medical care, nutritional monitoring, antenatal care, vaccinations, and health education... the project's main objective is to improve access for vulnerable families to basic health care and information on hygiene and health. A health centre is open 5 days a week and offers free access to care.



Technical Partner

Azza Women Association (AWA)

Institutional partner

Sudanese Ministry of Health

Financial Partners

UNCHF

World Health Organisation (WHO)

Program to improve food security in displaced families in El Fateh

El Fateh / Khartoum

Since January 2005

Food security, strengthening local capacities

The program beneficiaries are women from the communities, displaced from the El Fateh area, as well as pre-school aged children and young school leavers.

Description of work

Construction of a community centre offering technical and financial support for women's organisations to boost the local development of El Fateh. The objective is to advance their personal and professional skills so that they can ensure their food security: awareness sessions, training to understand their rights, vocational training, and assistance in setting up community services... This work is accompanied by initiatives focused on helping youths: return to school, nursery school, and youth clubs.

Technical Partner

Azza Women Association (AWA)

Institutional partner

Sudanese Ministry of Education

Financial partner

European Union

2.2 Asia

2.2 Afghanistan

Afghanistan ratified the International Convention on the Rights of the Child on March 28, 1994.

Key figures

897 child beneficiaries



1 expatriate employee and 2 Volunteers for International Solidarity (VSI)
74 domestic staff
EMDH has been present in Afghanistan since 2002

Geopolitical and social background

Afghanistan is experiencing an unprecedented humanitarian crisis: 20 years of conflict with the USSR, followed by a serious civil war which led to the seizure of power by the Taliban, and in the fall of 2001 the War Coalition conducted by the United States against the Taliban caused the collapse of the economy and massive population movements. Moreover, difficult weather conditions exacerbate the situation of those already made vulnerable by years of war. The UN estimates that even today, 50% of Afghans live below the poverty line, 3.5 million Afghans or 10.71% of the population are refugees, including Iran and Pakistan, and 150,000 Afghans are displaced within their own country.

The situation in Kabul is unusual because the Afghan capital cares for populations repatriated from Pakistan and Iran in a large way, and a large number of displaced civilians. This population influx emphasises the demographic pressure on deficient, or even absent, health and social infrastructure in some regions.

The years of conflict and the current situation have severely affected children. Experiences of violence, conflict, grief, displacement, poverty, and lack of opportunities have upset the traditional structures of the population without the emergence of new positive values. The social, cultural, and psychological care of children and families is deeply disturbed.

In addition, erosion of the traditional family unit has led to a transformation in the role and place of children in society, placing heavy responsibilities on them. According to UNICEF, more than 6,000 children in Kabul could be on the streets to financially contribute to the family, and an unknown but certainly very important number of children work at home, in particular, manufacturing carpets. In addition to the dangers of the street or the physical and mental consequences from long hours of labour, these children often do not attend school, are marginalised, and their prospects are low.

EMDH intervention background

EMDH works with disadvantaged children in Kabul, particularly in destitute neighbourhoods: Dasht-e-Barchi and Shindawal. Dasht-e-Barchi, located in Southwest Kabul, is a neighbourhood 65% populated by the Hazara minority, a vulnerable people rejected by the various regimes that have succeeded, whereas Shindawal is located in the centre of Kabul, near the river. A huge bazaar is located there, attracting many child workers exploited in shops and workshops or begging in the streets.

To respond to the trauma specific to these children and their families and the conflict situation still present in Afghan society, EMDH implemented a comprehensive psychosocial, educational, economic and medical support program. In addition, EMDH assists one or more adult family members in their job search.

Since June 2003, EMDH combined its work with four other NGOs working with children at risk in the area, thus forming a consortium for the Rights of the Child. This merger seeks to promote the implementation of the Convention on the Rights of the Child at a national level. Awareness campaigns training are regularly held with government departments, communities, and NGOs. Consequently, in 2007, the consortium established training for social workers, in partnership with the Ministry of Social Affairs. EMDH provided training on child development and psychological work. Moreover, officials working with kindergarteners in the area have asked EMDH to provide training focused on working with children and child protection.



Recreation centre, psychosocial care and vocational training (Dasht-e-Barchi)

Kabul, Dasht-e-Barchi (District 13)

Since February 2002

Psychosocial support, recreation, literacy for adolescents, women and young children, vocational training for girls

The centre cares for more than 270 boys and girls, ages 7 to 13, everyday.

45 children under 12 years attend literacy classes so that they can be integrated into school at their corresponding age level.

90 young girls ages 14 to 18, attend literacy classes and vocational training.

350 families, especially mothers, are socially sustained, according to the needs identified.

Description of work

Activities and psychosocial care

Care for children ages 7 to 13 is carried out in small groups, allowing for individual care. Recreation activities, focusing on socialisation, teamwork, and respect for differences, are offered to children as well as refresher courses for school. In addition, psychosocial support is carried out.

Girls aged 14 to 18 follow a full training course for one year: literacy, vocational training, training in health and hygiene, creative activities ...

Female literacy

Since October 2007, EMDH has assisted women between ages 15 to 35 to benefit from literacy activities and non-formal training (health, hygiene, child rights, etc.), to enable them to access education.

Social support for families

EMDH supports families in their job searches or distribution of goods as a primary necessity. Weekly meetings or ad hoc are also organised for parents. During these meetings, various topics are discussed: the rights of children, job hunting, child development, family planning, health, hygiene, and violence...

Technical Partners

Terre des Hommes
Aschiana
Children in Crisis
Afghanistan Tomorrow
Sports Without Borders

Institutional partners

Afghan Ministry of Education
Afghan Ministry of Social Affairs and Labour

Financial Partners

French Ministry of Foreign Affairs
European Union (Consortium TDH)
Social Future



Community Centre (Dasht-e-Barchi)

Kabul, Dasht-e-Barchi (District 13)

Since June 2007

Literacy, day-care for children ages 1 to 5.

100 women between ages 15 to 35 take part in a literacy program

Care is provided to 135 children from ages 1 to 5

Description of work

Women from the community, selected according to educational and economic criteria participate in literacy classes and non-formal education.

So that classes are held in the best conditions, EMDH provides the women with day-care, allowing their children to have space for play and learning, a rare occurrence in this country.

Emergency Program-Winter 2007 and 2007/2008

Winter emergency program

Kabul, Shindawal district (District 1)

January to April 2007

Distribution of blankets, wood, and hot meals

Description of shares

Due to a particularly harsh winter, an emergency program was set up in January and February, taking in over 300 young children from the streets. Among them, 60 boys between ages 8 to 14 were later integrated into the socio-educational centre to attend literacy classes.

Winter risk prevention programs

Kabul, Shindawal district (District 1) and Dasht-e-Barchi (District 13)

November 2007 to February 2008

Distribution of clothing for children, blankets, wood, and food

Preparation of the community centre to provide power during the winter

Description of work

To prevent the effects of winter on the health and well-being of children, EMDH distributed a warm clothing kit to all beneficiaries (children working on the streets, children weaving carpets, young women in vocational training).

In order to continue its activities under satisfactory conditions, EMDH prepared the local community centre to accommodate women in literacy and vocational training as well as pre-school children.



Technical Partners

Financial Partners

French Ministry of Foreign Affairs (FSD)
Pont-l'Abbé Solidarity

Institutional partners

Socio-educational Centre (Shindawal)

Kabul, Shindawal district (District 1)

Since October 2006

Vocational training, upgrading schools, and social monitoring

This is a centre for illiterate adolescents, excluded from school or the school system, working in the Shindawal Bazaar or at home.

90 girls and 45 boys ages 12 to 18 without any qualifications attend literacy classes, and some vocational training. 55 boys living on the street, ages 8 to 14 years, attended a literacy program.

Description of work

The repeated crises and conflicts during the past 30 years have left young people without education or qualifications. Often orphans and/or the sole source of family income, they are forced to work at low paying and non-qualifying jobs.

Literacy and vocational training

The objective is to provide adolescents working in the bazaar or at home in the district with a vocational training of their choice (in learning workshops for boys, in the centres for girls), accompanied by literacy classes to acquire basics reading and writing skills. For younger children (under 14) educational and recreational activities are established, to enable them to return to school during the school year.

Health, hygiene, child rights education sessions; recreational and creative activities and sports are offered to young people who want to take a break during their working day.

Technical Partners

Terre des Hommes
Aschiana
Children in Crisis
Afghanistan tomorrow

Financial Partners

French Ministry of Foreign Affairs (FSD)
European Union (TDH Consortium)

Institutional partners

Afghan Ministry of Education
Afghan Ministry of Social Affairs and Labour



Sports platform (Deh Qabel)

Kabul, Deh Qabel (District 6)

Open since 2006

Physical and sports activities for children and adults in the community

Physical and sports activities for children in the of Dasht-e-Barchi centre

Sports co-ordinator training

Description of work

Despite difficulties and climatic conditions, the sports platform was built and is now accessible to children from the Dasht-e-Barchi centre as well as residents in the district, who on a regular basis visit outside the children's activity time. This undoubtedly contributes to strengthen the social bond.

The platform activities - primarily sports - are in partnership with Sports Without Borders, which provides an expatriate trainer responsible for training athletes.

The achievement of a sports platform in the Dasht-e-Barchi district has two complementary objectives. On the one hand, it helps the children's psychosocial and psychomotor restructuring through play and practising sports. This practice has been supervised by sports professional. On the other hand, it strengthens the social fabric by creating a community identity, managed by a local steering committee to benefit the residents.

Technical Partners

Sport without Borders

Financial Partners

European Union (Consortium TDH)

French Ministry of Foreign Affairs (FSD)

Institutional partners

2.2.2 Burma

Burma ratified the International Convention on the Rights of the Child has been ratified on August 14, 1991.

Key figures

1,700 child beneficiaries

2 Volunteers for International Solidarity (VSI)

17 domestic staff

EMDH has been present in Burma since 2002

Geopolitical and social background

Blocked democratic transition, constant local armed conflicts, displacement, impoverishment of the economy, increasing prevalence of HIV/AIDS... The current situation in Burma, renamed the Union of Myanmar by the military junta that has been in power for several decades, leads to social marginalisation of the most vulnerable, especially children. Although in 1993 Burma empowered a Children's Act, it is still well below international standards - for example, the



criminal age is 7 - and the resources mobilised for its implementation are minimal. In 2006, 4 million children ages 5 to 13 were not in school and the latest UNICEF report indicates that there were 1.7 million orphans in Burma 2005.

EMDH intervention background

In 2003, an exploratory mission allowed EMDH to focus its intervention on the most vulnerable children. The association decided to primarily guide its actions towards children placed in institutions (orphans, street children, and children in conflict with the law...). The term "institution" encompasses different situations, places, and statutes depending on the country and the culture. These structures are often disadvantaged in terms of financial resources and cannot provide decent facilities, basic maintenance of equipment, or even offer a simple balanced meal to children in care.

It is estimated that there are 30,000 children living in institutions in Burma, but this figure could be much higher since it covers only institutions registered with the Ministry of Social Affairs. Most of these children reside there until their majority, sometimes longer.

The health state of these institutions requires an emergency response; EMDH first implemented a rehabilitation project that has significantly improved the financial and physical living conditions of children.

Project support, assistance, and support for Burmese orphanages and learning centres

Rangoon, Mawlamyine, Lashio, and Mandalay

Since April 2004

Protection, hygiene, and health education

EMDH intervened in 12 institutions (located in and around Rangoon, in Mawlamyine, Lashio, and Mandalay): 4 orphanages for orphaned children under 5 and 8 learning centres receiving children ages 6 to 18, placed directly under the management of the Department of Social Affairs.

In the government learning centres, the youth are mostly street children, orphans, and children awaiting trial or serving their sentence.

Description of work

EMDH set up awareness and training sessions on hygiene, fun, and creative workshops and organises self-expression activities. It also trains educators, who intend to maintain contact with families and brightens children's lives. Each week, these educators conduct fun awareness workshops. Children have the opportunity to sing, dance, draw, play, and laugh. It is also an opportunity for them to talk, confide, and set goals in their personal lives. For some, contact with the EMDH educator is their only link with the outside world.

EMDH also renovates centres to ensure better hygiene and safety for children and equips them to better suit their numbers. The educational assistants are taught training activities and educational games. Renovation and equipping of nearby elementary schools and the distribution of school materials promote child education. Finally, hygiene kits and "bedding kits" and clothing are distributed to all children from 12 centres and a doctor in the Rangoon centres provides regular medical care.

Technical Partners

- EDEN Centre

- 8 training schools (centres): Kaba Aye Training School, Kyeik Wine Training School, Ma Li Kha Training School, San Nget Aw Training School, Boys Training School Mandalay, Mandalay Girls Training School, Moulamein Training School, Lashio Training School



- 4 nurseries/orphanages: Schwegondine Residential Nursery, Htaikkyant Residential Nursery, Mandalay Residential Nursery and Mawlamyine Residential Nursery

Institutional partner

Burmese Ministry of Social Affairs

Financial Partners

ECHO
UNICEF
BRITISH EMBASSY
Tolkien Foundation
Office DEPOT
French Embassy

2.2.3 Sri Lanka

Sri Lanka ratified the International Convention on the Rights of the Child has been by on January 12, 1991.

Key figures

555 child beneficiaries
2 Volunteers for International Solidarity (VSI)
31 domestic staff
EMDH has been present in Sri Lanka since 2005

Geopolitical and social background

2007 was marked by the interruption of the peace process between the Sri Lankan government and the rebel movement, the Tamil Tigers, with the eviction of the latter from negotiations and an intensification of fighting in the North and East of the island. In a quarter century, the conflict has claimed more than 65,000 lives and left hundreds of thousands fleeing the fighting to regroup in temporary camps where NGOs are trying to provide water, food, and basic materials.

This year has also not seen the human rights situation improve. Restrictions and media control was maintained while attacks have multiplied in the capital of Colombo.

The economic recession has worsened due to a significant increase in public debt and continued fighting.

EMDH intervention background

EMDH began working in Sri Lanka in 2005 following the tsunami, the tidal wave that hit Southeast Asia on the morning of December 26, 2004. The economic and psychological impact of this catastrophe is dramatic for both children and their parents. The non-financial effects of the disaster are important: psychological impact of traumatic experiences, sense of poverty, physical and psychological loneliness, isolation of children, and loss of bearings...

The "psychosocial support to children affected by the Tsunami" program in 5 camps in the Matara district was closed after receiving more than 5,000 children. Beyond emergency capabilities, it has enabled EMDH teams to identify the need to care for these children over the long term, whether or not these needs relate to the Tsunami.

EMDH intervention strives to strengthen the protection of children in the Matara and Galle districts, while ensuring quality program output implemented in the wake of the Tsunami. The association is present in children institutions caring for



children in great difficulty and among the most vulnerable communities. It offers recreational and cultural activities, formal and non-formal education, as well as psychosocial, and legal support.

In addition, EMDH implemented an important training and awareness program for various child welfare players, both at the institutional and national level, to register its activities in the long term.

Program to support vulnerable children in the Matara district with attention given to children placed in institutions.

3 private institutions in the district of Matara

Since March 2006

Psychosocial and socio-educational intervention for children in conflict with the law, exploited children, and street children

As part of its work with victims of the Tsunami, EMDH has worked in co-ordination with institutions for children in difficulty. EMDH was naturally interested in the situation of these children for whom few activities are offered and whose care is not always suited to the best interests of the child. EMDH wanted to get involved in the institutions to accelerate reintegration into the family, improve the care of children, and ensure their rights.

Description of work

Started in January 2006, the program initially consisted of 1,100 children exploited, street children, disabled children, girls, and children cared for in institutions... In this context, EMDH directly cared for 275 vulnerable children and supported fifty parents in 2007.

The teams are now in institutions but also in the children's home communities to work on the prevention and protection of children in the family, and assist their reintegration.

Program to support vulnerable children placed in institutions in the Southern Province of Sri Lanka (Galle and Matara districts)

Southern Province - The Galle and Matara districts

Since September 2006

Psychosocial care, prevention, family reunification, recreation, education, medical care, and legal support

In Sri Lanka, more than 19,000 children live in centres called "institutions" (public and private): abandoned children, street children, victims of neglect or abuse, extreme poverty, those suffering from mental retardation, children in conflict with the law... These institutions care for all the children in the same manner, without providing appropriate care for their situation.

Several research studies show that the living conditions in these institutions are often unsafe and stigmatising. A link with the family is sometimes denied and preparation for reintegration into the community is very limited.

EMDH helps 280 children in 6 institutions, as well as children from vulnerable communities (500 children in 10 villages) and their families. The child protection government-affiliated groups, surveillance officers (PO's), Awareness Officials (CRPO's), and Galle and Matara social institutions benefit from this technical assistance. Training is also offered by our



teams to provide better understanding of children's rights and improve the protection and care of children in institutions and rural communities. Of the institutions supported by the association, over 30 employees have received training.

Description of work

The project aims to strengthen the child protection system by working in direct collaboration with government officials to analyse protection needs and establish proper support and response to children's issues. It was developed around 3 axes:

Prevention in communities: -

- Recreational and non-formal education (awareness of child rights, health and hygiene, sex education...) for children;
- Community awareness of the issues surrounding child welfare and non-formal education (Rights of the Child, hygiene and health, sexually transmitted diseases, alcohol...);
- Identification of vulnerable or at risk children and psychosocial work with families and government officials to find solutions to these issues (legal, administrative, professional, educational, medical, psychosocial...).

Work within the institutions to improve the children's living conditions:

- Strengthening the education system;
- Organisation of recreational and sports activities for children;
- Promotion of non-formal education with educators;
- Individual medical care;
- Emotional support for the most traumatised children;
- Individualised rehabilitation Support.

Reintegration/Reunification - preparation for life after the institution:

- Analysis on a case-by-case basis with government officials;
- Resume contact with the family and support the reunification;
- Reintegration into community
- Individualised support after reintegration/reunification and resolution of any problems.

Technical Partners

Sarvodaya
Save the Children - Sri Lanka
National and provincial core groups on de-institutionalisation
UNICEF
World University Service of Canada (WUSC)
Right to Play

Institutional partners

Ministry of Social Welfare
Ministry of Child Development and Women Empowerment
Ministry of Education
Department of Probation

Financial Partners

UNICEF
Social Future

2.2.4. Vietnam

Vietnam ratified the International Convention on the Rights of the Child has been on February 28, 1990.



Key figures

671 child beneficiaries
1 Volunteer for International Solidarity (VSI)
5 domestic employees
EMDH has been present in Vietnam since 1993

Geopolitical and social

Since 1986, Vietnam has committed to the Doi Moi, "The Renovation" policy. It translates into a slow process of opening and modernising the economy. However, the communist regime continues to invoke national unity, security requirements, and public order, as means to justify the continued police surveillance and restrictions on freedom. In 2007, while the economic growth rate reached 8.5%, according to the World Bank nearly 20% of the Vietnamese population lives on less than \$2 a day. Deprivation greatly affects rural and mountainous areas causing a massive exodus from these areas to big cities where migrants are trying to survive. In 1988-1989, because of the socio-economic deterioration, authorities put an end to free public education resulting in a significant regression in an educational context.

EMDH intervention background

EMDH is one of the few international NGOs present among school children in Vietnam. The association has been involved in Vietnam since 1993. It worked as a first step in the construction and equipping of elementary schools in the Southern provinces (Ben Tre, Soc Trang...), and provided technical and financial support to care for street children of Ho Chi Minh City, as well as disabled children within the Ca Mau province in collaboration with Vietnamese authorities.

Since 2006, EMDH has developed programs in Southern Vietnam. One in Ca Mau, which has a total of 3,500 disabled children who received no care before EMDH intervention. The other program is in the Binh Than District, a neighbourhood in Ho Chi Minh City, where EMDH works with school children. Often derived from migrant families, these children are left to care for themselves on the street, and may have to work to help their families.

Support program for disabled children

Ca Mau Province

Since October 2001

Education, training, health - Children with disabilities

In Vietnam's extreme South, the province of Ca Mau is particularly poor. Access to education and healthcare is difficult for everyone, particularly for disabled children, of which there are many in this region.

These physical and neurological disabilities are related to poverty (malnutrition, lack of healthcare access) are caused by the frequent drownings in the Mekong Delta area, but also by chemical defoliants spilled by the United States during the Vietnam War (1945-1975). The consequences have been devastating in ecological and human terms. Even today, many of the children born with deformities as a result of genetic alterations are caused by these products.

EMDH cares for about 500 children in 5 districts in the province and extends this support to 800 children, to accommodate a large proportion of disabled children in the 9 Districts in the Ca Mau province.

Description of work



The assistance program for disabled children aims to provide answers to distraught parents concerning their child's disability, to better inform people and reduce the social and economic burdens that a disability can entail. The activities take place within the awakening rooms and inside the child's home. Individual monitoring is in place for each child. EMDH carried out comprehensive intervention on the issue of disability in the Ca Mau province in a broad manner:

- support for children: care and information for children and parents in EMDH clinics and awakening rooms, diagnosis, medical support, early detection of disability, surgery, children's tools, grant funded school integration...
- support for parents (home adjustments and training sessions);
- community awareness to prevent the causes of disability and early detection of children with disabilities;
- training with government partners to replicate the work done with disabled children in Ca Mau in other provinces.

Technical Partner

Children Action Foundation

Institutional partner

Family and Childhood Demography Committee (CDFE)

Financial partner

Europaid

Support Program for School Children

Ho Chi Minh - City (Than Binh District)

Since 2000

Education, training, recreation

School children, migrant children

Care is provided for nearly 200 children between the ages of 5 and 18. Most are from migrant families and one quarter of these children work to help their families. For economic reasons or for lack of papers, they cannot attend school.

Description of work

Our assistance to a local partner, Xuan Nhi 3 foster home, provides support to these children through 3 school activities. Primarily, we provide support through tutoring (literacy, computer skills, and English). One of the objectives is to enable these children to return to school or be directed towards vocational training. Secondly, support is provided through recreational activities, in order to help them recapture their childhoods. Activities are organised: physical activities, crafts, organising outings and events. In this section, sessions and civic awareness on various topics were added (on the dangers of the street, values, AIDS...). Finally, EMDH sets up vocational training for older workers.

At the same time, social support is provided to families through home visits, assistance to obtain papers or to do business in connection with their children (birth certificate, school registration...).

EMDH wants to extend the program to other centres of Ho Chi Minh - City and the province of Phu Yen.

Technical Partners

NX3Training Centre

Education For Development



Institutional partner

Foster Home NX3

Financial Partners

ECHO

Social Future

College Hills

Tolkien Foundation

2.3. Middle East

2.3.1. Iraq

Iraq ratified the International Convention on the Rights of the Child on June 15, 1994.

Key figures

525 child beneficiaries

No Volunteers of International Solidarity (VSI)

27 domestic staff

EMDH has been present in Iraq since 1995

Geopolitical and social context

Two wars and twelve years of international embargo decreed by the United Nations under Saddam Hussein's regime have weakened the Iraqi population in a lasting manner.

The country's stalemate situation in the current conflict and the consequences caused by the American occupation merely keep the country in this chaotic situation. Humanitarian aid is struggling to reach people because of access and security issues. According to the NCCI (NGO Co-ordination Committee in Iraq), only 80 international organisations and 200 Iraqi organisations still operate effectively in Iraq. Since 2003, at least 94 aid workers have paid for their activities in this country with their lives.

The war triggered by the American "coalition" in 2003 led to a societal breakdown, widespread insecurity, daily violence, and a brutal disintegration of public services (water, electricity...). The health situation is now disastrous.

EMDH intervention background

EMDH took a stand against the war, just as it has always stood against the embargo on Iraq, stressing that its effects primarily affect the civilian population. Thus, according to WHO, life expectancy for men declined from 65 to 48 between 2000 and 2006.

The education system, which was one of the most powerful in the Middle East, is now in a catastrophic state: war and economic crisis have accelerated the dropout phenomenon and implementation of child labour.



In this very difficult social and security context, EMDH teams intervened to assist isolated children and those living on the street, problems that Iraq is also facing.

Family reintegration program for isolated children

Baghdad and 10 governorates (Babylon, Karbala, Najaf, Al Gadissya, Wasit, Missan, Thi Qar, Basrah, Kirkuk, Nainawa)
Psychosocial support, reinforcement of local capabilities

EMDH works with orphaned children or those considered as such because of their isolation from their families and beggars. They are cared for in centres made available by the Iraqi Ministry of Social Affairs. In 2007, 525 children and their families, 41 staff members of the Iraqi Ministry of Social Affairs, and 21 institutions have benefited from EMDH work in Iraq.

Description of work

EMDH seeks to reintegrate isolated children with their families when they can be identified. This requires financial and psychosocial support for the families and assisting children towards reintegrating into their families and school

EMDH established and supports 14 family reintegration subunits for 14 orphanages in 10 governorates. The goal is to train these units and provide them with the necessary resources to continue to implement the reintegration process even after EMDH's departure. The association supports the Family Reintegration Unit staff, created by the Iraqi Ministry of Social Affairs. It deals with strengthening the staff's skills for effective support of the family reintegration process across the country.

EMDH also provides psychosocial support to children and their families to ensure that they have a stable family life and help them solve any problems they may face. Finally, the association financially assists the reinstated children's families to ensure improved living conditions.

Technical Partners

Local Iraqi Associations
MCC
CWS
Iraqi Ministry of Social Affairs

Institutional partners

Iraqi Ministry of Social Affairs

Financial Partners

UNICEF
CHURCH WORLD

2.3.2. Lebanon

Lebanon ratified the International Convention on the Rights of the Child has been on May 15, 1991.

Key figures



*1,051 child beneficiaries
3 Volunteers of International Solidarity
84 domestic staff
EMDH has been present in Lebanon since 2006*

Geopolitical and social

After 15 years of fratricidal war and nearly 20 years of occupation in Southern Lebanon by the Israeli army, Lebanon has again been shaken by internal tensions with its neighbour Israel. During the summer of 2006, the conflict between the two states left the Southern region devastated and the population severely affected by the consequences of this fighting (displacement, road destruction, infrastructure, and housing). Before the clashes, Southern Lebanon was already one of the most deprived areas of Lebanon, where there exists almost no structure or support for children.

EMDH intervention background

The conflict has made the situation for the population of this region even more precarious, who initially had to flee the fighting, then return to destroyed villages where the local economy was devastated (making olive tree and mined tobacco fields unusable, shops and businesses destroyed, etc...). The children were again among the most affected, and where the financial need has largely been covered by foreign aid, psychosocial support need for children are greater and more complex to identify and cover.

In August 2006, at the end of the war, EMDH conducted an exploratory mission in the field and in September 2006 started a psychosocial and socio-educational assistance program for the children in the affected villages in Southern Lebanon.

Psychosocial and socio-economic assistance program for children affected by the conflict in Southern Lebanon

*Tibnin and 13 other villages in Southern Lebanon
Since September 2006
Psychosocial and socio-educational intervention for child victims affected by conflict*

In 2007, the program comprised of 14 villages in Southern Lebanon: Tibnin, Yatar, Kherbet Selem, Harris, Ayta al-Jabal, Kafra until September 2007, Souwaneh, Chakra, Beit lif, Deir Antar, Kfar Dounine, Tulin, Rchaf, and Soulthanieh. 1,051 children have benefited from psychosocial care and self-expression activities in the centres established by EMDH and its Lebanese partner, the ALPHA Association, and relevant municipalities. About 11,744 children in these villages have also participated in occasional socio-educational activities (festivals, cultural outings, and so on.) organised by EMDH and ALPHA.

Description of work

EMDH and its domestic partner, ALPHA, have set up 17 centres in 14 villages. Children underwent consultations held by psychologists to assist our teams in identifying children experiencing difficulties or psychological disorders, as well as their families. Speech groups have also been offered to parents; it is essential to take the parents' situation into account, as they were confronted with previous conflicts and effects of the occupation. The effect of numerous traumas is evident and for this childcare to be relevant it must include an understanding of the trauma experienced by parents. The children have benefited from the volunteer guidance to participate in self-expression and socio-educational activities: drawing workshops, crafts, games, stories, songs, etc.



Several fairs were held in each village. The village children were invited to participate in open and recreational activities.

From November to December 2007, open days were also held to raise awareness of EMDH activities.

Technical Partner

ALPHA (Lebanese NGO partner in the project)

Financial partner

ECHO

2.3.3. Occupied Palestinian Territories

Israel ratified the International Convention on the Rights of the Child on October 3, 1991, which applies to the Palestinian Territories.

Key figures

6,500 direct child beneficiaries

2 Volunteers for International Solidarity (VSI)

11 domestic staff

EMDH has been present in the occupied Palestinian territories since 2001

Geopolitical and social context

The situation in the occupied Palestinian territories has deteriorated politically, economically, and socially in recent years. The effects on all aspects of life for the Palestinian people are serious. According to the Palestinian Central Bureau of Statistics (PCBS, August 2007), 57% of households are living in poverty of which 49% of homes are in the West Bank and 79% in the Gaza Strip. Two out of three families live below the poverty line. The actions of the Israeli government, including expanding Israeli occupation in the Palestinian territories and the construction of the Israeli West Bank barrier, have imposed new movement restrictions for Palestinians and continue to harm the economy of a future Palestinian state.

Today, the security fence established by the State of Israel divides Palestinian territories, cities that were there just a few minutes drive from each other are now partially or totally isolated.

The Bethlehem district will soon be completely surrounded by the fence. The progressive isolation of Palestinians within the fence is leading to considerable deterioration of the socio-economic situation (unemployment, access to resources, etc.) as well as serious consequences on community life, especially for children. The children live in a state of permanent insecurity, including within their families, many have dropped out of school, become victims of behavioural disorders, or present significant risks of developing such disorders.

EMDH intervention background

EMDH work to care for children affected by violence began in May 2001 in the districts of Bethlehem and Hebron. Following the outbreak of the second intifada, our work consisted of providing immediate psychological support to children, in order to address the upsurge of violence in the occupied Palestinian territories.



The Israeli West Bank barrier established by the State of Israel divides the Palestinian territories and therefore makes it difficult to establish activities in different cities and remote areas. Since 2003, EMDH developed a comprehensive program to care for children in the Bethlehem district in partnership with the "Bethlehem Arab Society for Rehabilitation" (BASR).

This program strives to provide individual or group support, for children traumatised by the violence of war, and their family circle, and the prevention of psychological disorders by promoting activities to develop resilience abilities in the children. We help to educate the community on the need to psychologically care for children and respect for their rights. The program also includes a recreational component: access to games through toy libraries, in air-conditioned centres...

Comprehensive care program for children affected by violence in the Bethlehem district

District of Bethlehem (West Bank)

Since 2003

Psychological support - Recreation, Education, Training

These are more than 6,500 children who benefit from psychological care and/or support in the city of Bethlehem, in villages close to Obeidieh, Nahalin, El Khader, as well as in the Dheisheh refugee camp.

Families and teachers are also offered support that helps them to better manage their problems and those of the children for whom they are responsible. The effects of war and violence on the psychological state of children are very worrying: they watched their homes be destroyed, their family members injured, sometimes killed. This situation creates a constant sense of insecurity and can lead to traumatism. This is in addition to the economic problems faced by families, caused by repeated curfews, restrictions of movement...

Description of work

A team of psychologists and social workers provide support to children and their families or their guardians through individual care and group therapy.

The teaching staff manages the children's care in community centres, and offers recreational activities, free access to individual or group games, as well as recreation days.

Co-ordination is also established with childcare professionals in the region to develop training. Finally, EMDH carries out regular awareness work on the rights of the child.

Technical Partner

Bethlehem Arab Society for Rehabilitation (BASR)

Financial Partners

2.3.4. Yemen

Yemen ratified the International Convention on the Rights of the Child on May 1, 1991.

Key figures

200 child beneficiaries



3 Volunteers of International Solidarity (VSI)
13 domestic staff
EMDH has present in Yemen since 2005

Geopolitical and social context

The country was originally divided into two parts: the Republic of North Yemen and South Yemen. The reunification of the two republics in May 1990 has provoked clashes between supporters of the separatist South and the army. It was not until 1994, at the end of the fighting, that reunification became effective. Since then, successive re-elections of Ali Abdallah Saleh as President of Unified Yemen appear to have restored political stability to a country that is now enjoying growing international recognition, despite economic difficulties.

In fact, in the context of economic crisis for all developing countries, Yemen has paid dearly for its support to Iraq during the Gulf War in seeing its international aid reduced. As the poorest and most populous country in the Arabian Peninsula, Yemen has since tried to mobilise and channel external funding to reinforce its capabilities.

EMDH intervention background

Many governmental and non-governmental authorities agree that the phenomenon of child workers and street children affects most Yemeni cities, primarily the capital Sanaa . It is indeed an important pole of attraction for poor families. About 3 million Yemeni children live in poverty, and among them 45,000 work. Most live in this manner to support their families.

The final step in the marginalisation process, abandonment of the family home, has complex roots that are different for each child. However, there are identifiable constants: most of these children come from disadvantaged families, and are victims of unemployment and social isolation due to rural exodus. In the streets, these children seek daily income from informal, even illegal, activities and are subjected to various forms of abuse (violence, economic exploitation and/or sexual). Child trafficking, particularly between Yemen and Saudi Arabia, is a growing concern.

Marginalisation Prevention Program for working children and street children

Sanaa

December 2006 - November 2008

Psychosocial, medical, and socio-educational intervention for street children

The current program is the fourth project conducted by EMDH since its establishment in Yemen in March 2005. Five criteria to determine vulnerability have been identified by social workers to distinguish street children and child workers. Of the 1,300 children identified as previously identified as such, 200 are the direct beneficiaries of the EMDH project because they meet all the vulnerability criteria. They are monitored on a constant basis and participate in daily activities run by the project. Many children more often enjoy the "occasional" activities because they come in from living on the streets of Sanaa for specific periods during the school holidays or Ramadan for example.

EDMH's work also affects other indirect beneficiaries: children partially meeting the vulnerability criteria who participate in certain activities (meals, hygiene kit, outings...) in five intervention districts, children participating in activities conducted by associations, and the families of direct beneficiaries (financial support, referral to social and economic services...).

Finally, the EMDH teams implement employee training program for the staff of eight Yemeni associations that provide space equipped to care for children.

Description of work



Five days a week, two groups of about 30 children take part in social, educational, recreational, and medical activities in the five intervention districts. These activities take place either at the EMDH office or in a public place (garden, stadium...) or on the associations' premises. During these activities, children are interviewed to better understand their journey, their lives, their family, their health, and their dreams. With this information, specific activities targeted to them are put in place, such as tutoring, recreation, family visits, medical visits with an EMDH doctor, individual care (child and family), distribution of hygiene kits, clothing, nutritional supplements...

Reinforcement of abilities and transfer of skills from social workers employed by EMDH partners and associations, are another important focus of the program in Yemen. Depending on the needs of these associations, various training sessions with varied thematic content (Rights of the Child, leadership techniques, hygiene, psychosocial approach, project cycle management...) are carried out either by a training co-ordinator, the social work co-ordinator of, or by external co-ordinators.

Technical Partners

"70" Hospital
8 local associations/foundations

Institutional partners

Yemeni Ministry of Planning and International Co-operation
Sanaa City Council
High Council for Mother and Child

Financial Partners

French Ministry of Foreign Affairs (SCAC)

2.4. France

2.4.1 Children of the World Centre Introduction

The International Convention on the Rights of the Child was ratified on August 8, 1990.

The Children of the World Centre (CEM) is an emergency shelter mission set up by EMDH in 2002 in the Paris region. The centre is open all year, 7 days a week, 24 hours per day, and has capacity for 20 to 25 young people.

In 2007, CEM cared for 193 unaccompanied foreign minors. These children arrived in France alone in the hope of finding better living conditions. They are often victims of trafficking and are living in extremely difficult conditions.

The State recognises the CEM as protecting unaccompanied foreign minors prior to any common law, assisting them to understand their rights, recognise their identities, and their access to education and leisure. With comprehensive care for unaccompanied foreign minors in Paris, CEM and three other associations developed interconnected work. After being identified as street children, they are guided to and welcomed at the centre so that they can be protected. They are then greeted by a teacher who speaks their language. A shower, clean clothes, and snacks are provided. The centre's operations, rules, and their schedules are explained. They then receive a medical check and may be referred to a specialist (dentist, eye doctor...) and in some cases, receive psychological support. The first days at the centre are devoted to putting them at ease and understanding their personal and family history. Once the information is collected, their socio-educational project and resources to be used to achieve this are examined.

2.4.2. Description of activities

Once the admission procedures are carried out, the educational and integration activities are launched.

Each morning is devoted to French language learning (ESL), organised by volunteer teachers made available by our partner organisation Agir ABCD. These courses are vital for these young people and their future in France. Groups are comprised in 3 levels: beginner (split between "post-alpha" and "ESL beginner" level), intermediate, and advanced.

In the afternoons, various educational and recreational activities are provided to the young people being cared for. The outings are designed to promote their discovery of the host country's environment and their independence, strengthening the cohesion of the group, and access to recreation.

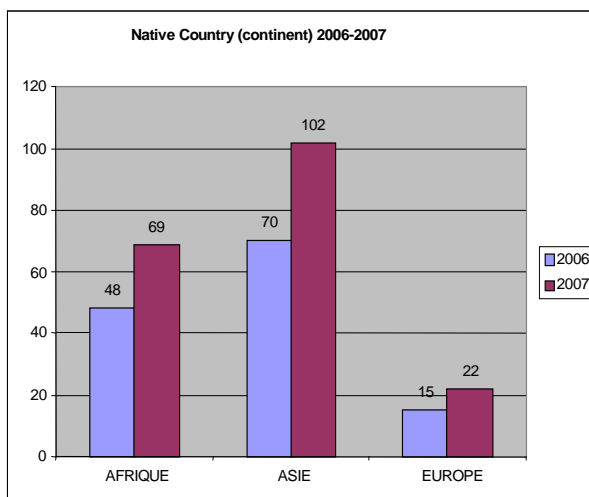
Educational outings such as visits to museums, exhibitions, and other activities are prepared for during the ESL course by written documentation. Once the trip is organised, an oral report is made in each group level and leads to a group production (report, fresco).

The cultural activities are diverse and varied: outings to discover Paris (monuments, gardens, parks...) and performing arts (dance, theatre, cinema, festivals...).

The weekly cooking workshop is very popular among the young people, socio-educational teams, and guests. A volunteer and an educator in the Kremlin-Bicêtre recreation centre's kitchen supervise the young people while they cook. This workshop is a time of friendship, exchange, and discovery of each other's culture through cooking.

Regular weekly sports activities have been put in place (swimming in summer and skating in winter). Other occasional discovery and introduction activities to various sports are conducted in partnership with the Kremlin-Bicêtre and recreation centres in the city.

In the evening, young people participate in computer, video, and library workshops. These activities provide them with the opportunity to develop skills and maintain a link with their native country, by reading, communicating by e-mail, or searching for information.

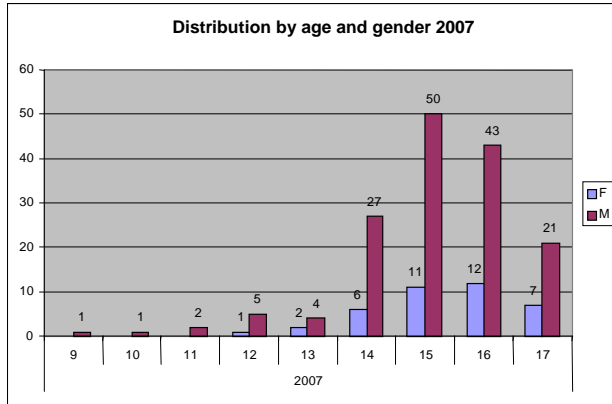


2.4.3. IFM cared for in 2007

During 2007, SAOMIE was able to shelter 193 new Isolated Foreign Minors, representing a net increase compared to

2006. The youths cared for in 2007 were mainly from Asia (Afghanistan and Punjab). However, the number of native countries increased from 28 to 35, with the emergence of countries in the Horn of Africa. In contrast, the number of IFM from certain parts of Asia (China) and Europe (Romania) decreased.

The majority of young people at the centre are boys (80%), while girls are usually of African origin (64%).



The average age is decreasing, from 15.7 in 2006 to 15.2 in 2007. Only 28% are Francophones, compared to 37.5% in 2005.

2.4.4. General guidelines

Following the evolution of the centre's activities and educational constraints, we decided to create a "lady of the house" position, to support the socio-educational team in its tasks managing community and everyday life.

Some team members are equally involved in several training schools for social workers to explain the fieldwork

carried out with IFM and issues related to their care. The team also met with the external partners to keep themselves informed of new approaches to teaching French and highlighted the work carried out (seminars, round tables...).

Institutional Partners

- Paris DASS
- ASE Paris
- Juvenile Court and Prosecution
- The Children's Advocate
- Kremlin Bicêtre City Hall
- Ile-de-France Regional Council

Associative partners

- France Asylum Country
- Bus des Femmes
- Acting ABCD
- COMEDE
- ESJ
- Parcours d'Exil (Journey of Exile)
- Culture du cœur (Culture of the Heart)
- Kremlin-Bicêtre City Hall Recreation Centre and Youth Services

Financial Partners

- DASS
- HSBC
- La Voix de l'Enfant (Voice of the Child)
- Business Objective Foundation

3. Awareness of child rights and activities of local committees



"The recognition of the child's personality with all rights attaching thereto under the International Convention on the Rights of the Child (CRC)" is EMDH's principal mandate. Awareness activities are the core of our work. In an interconnecting manner, each of the programs in 12 countries where EMDH or the association is present, beyond their protection objectives, strive to mobilise the rights of the child. Children and parent beneficiaries, both as technical and financial partners, as well as local and domestic stakeholders are both players and recipients of CRC work.

In 2007, four other types of work have been implemented in France to increase awareness on the Rights of the Child:

- Interventions with groups of children and training educators or facilitators;
- Education Development;
- Distribution of educational tools to raise awareness of the rights of the child;
- Leadership and development of local network of volunteer committees realising our work.

I. Interventions with groups of children and training of educators or facilitators

Interventions with groups of children were conducted in Nevers, Tourcoing, Angoulême, Rouen, and Toulouse Penmarch. More than 1,200 children attended these conferences where the work carried out by Children of the World – Human Rights was explained. These conferences have also provided an opportunity to answer their questions on the Rights of the Child and CRC implementation.

In addition, local committees have carried out 29 awareness interventions on the rights of the child with 1,398 students from elementary school or high school. These interventions have taken place within the children's school curriculum, which allowed teachers to deal with issues in line with the curriculum and link them to the International Convention on the Rights of the Child. In some schools, posters were created by children to express their view of their rights.

EMDH was also involved, in partnership with the City of Mureaux (78), in 16 primary schools with 35 CM1 and CM2 classes in the city. More than 850 children have benefited from this activity, which aimed to increase awareness through an election of the Children's Municipal Council. During these awareness sessions EMDH teams focused on Article 16 of the CRC: "the right to expression". Role-playing games allowed students to be placed in a situation and to better understand the election for representatives of the children's municipal council.

Four sessions were held and over 60 volunteers and trainers, educators, and facilitators were trained. At the end of training, participants were able to interact with groups of children to inform them of their rights. A dozen training sessions for EMDH employees on the identity of the structure and the Rights of the Child were held throughout the year. More than 125 people, volunteers, employees, and Volunteers for International Solidarity attended these courses.

II. Development Education

On November 20, 2007, a public lecture on "*Afghanistan - The child hostage conflict: impact, protection, ethics*" was held at the Town Hall of the 4th arrondissement of Paris. An advance screening of the film "The Kite Runner" at the Paris City Hall Auditorium, in collaboration with Paramount Pictures followed the conference.

The Children of the World Choir performed 17 concerts in France and abroad for more than 3,000 spectators.

Five hundred civil society representatives, from 32 different nationalities, participated in a seminar on "*The fruits of*



humanitarian action" led by the EMDH General Delegate, under the framework of the SIETAR EUROPA International Congress

The Founding President Yves BUANNIC published his memoirs entitled "*L'Enfant du Large*" published by Presses de la Renaissance. Much of the book is devoted to his commitment to the association and particularly the birth and history of Children of the World – Human Rights and his struggle to create respect and promotion of the Rights of the Child.

Press releases were issued regularly. EMDH strongly condemned the Arche de Zoé initiative, to evacuate 10,000 children from Darfur (a figure originally reported by the Arche de Zoé) and have taken them into foster care families in Europe and the USA. From October 26, EMDH felt that it was "unacceptable and contrary to the Convention on the Rights of the Child and all ethical and humanitarian principles". While recognising the current need to protect children in Darfur is important, but [that] the uprooting is arbitrary and dangerous. The exfiltration of young children torn from their homelands to be sent to lands to which they have no connection, while they cannot for good reason decide their own fate constitutes an absolute violence against them. They must be protected and cared for at home. The releases and interviews given to the press resulted in numerous articles condemning the initiative and recounting the reality of the situation of children living in displacement camps in Darfur.

III. Dissemination of educational tools to raise awareness of child rights

In 22 years of activities and interventions with 25,000 students, EMDH has capitalised its experience to develop a real awareness on the Rights of the Child, because it wants to strengthen its schools and Institutions in France, and its international missions.

To date the teaching methods were based on the use of a "teaching kit" with mixed media. However, this kit does not transfer to different situations and to the numerous expectations, whether in France or in various international circumstances. The kit was not comprised of age-appropriate exercises but general activities and was created based on the needs of the French public. EMDH decided to design and deploy a new teaching strategy based on new materials and activities dedicated to raising awareness on the rights of the child.

2007 has enabled the design of a new kit, incorporating an international dimension and a matrix by age/subject. Pending the finalisation of this new kit and funding, the original kits are still distributed to French schools, city halls, and libraries that request it.

I.V. Leadership and development of a local volunteer committee network realising our work

Local committee work continued in 2007, including organisation and participation in regional events (solidarity week, comic book fair, mixed music festival, concerts, and exhibitions...) as well as the implementation of children's rights awareness programs. Training sessions for volunteers were also conducted.

4. Human Resources

In terms of human resources, EMDH values are based on a desire to advance its sustainable expertise in childhood services, but also that of its staff and partners in all of its 12 intervention countries. This requires a strong local employment policy. In 2007, the majority of local staff was employed by EMDH, being 77% of the total. This proportion represents a unique cultural richness, enhanced by the variety of involvement.

Today, in general, in a general trend toward more salaried employees than expatriate employees, EMDH nevertheless works to maintain the Volunteering for International Solidarity. On December 31, 2007, the number of Volunteers of International Solidarity represented 4% of the total. This year has seen a marked increase in staff recruited at an international level, the number of nationalities represented increasing to 6: Iraqi, Italian, Dutch, Belgian, Danish and



French. At the crossroads of all these individual pathways, is the spirit of continuing commitment to create a collective strength around of the mandate of the association.

In addition, qualified volunteers continue to represent a major characteristic of the identity and the history of the structure, with almost 9% of staff for those activities solely conducted by the headquarters. EMDH wishes to continue this momentum based on the involvement of all.

EMDH businesses continue to attract many professionals on both administrative skills and management skills as the expert place where a transfer of powers to local partners on the defence of children's rights, the socio-educational and psychosocial support, and in the field of co-ordination and administration.

Personalised support work and career development have been integrated both to retain the best people and "open doors" to new employees.

2007 was a year marked by youth employment in the Services at the association's headquarters who, thanks to future contracts and work placement agreements, have been able to be sponsored by professionals and assisted in their entry into the work world. As every year, a number of the young people were able to improve their learning by support missions in the field. The generational balance was maintained by using professionals who represent all age groups.

The increased recruitment of professional employees and volunteers from non-associative sectors opened bridges with the private sector and enriched our methods and practices.

4.1. Highlights of 2007

Human resource management has been organised for the last two years around a development and management centre enabled us to reinforce our expertise and translate this to the field thanks to the Mission Managers and Administrators.

This organisation has helped develop interrelated work and in particular to launch a study designed to harmonise practices in 12 EMDH intervention countries, taking the diversity of labour law and specific circumstances into account.

In addition, a study was conducted on the changing demands of expatriates in terms of labour, family policy, and expatriation.

Follow-up of Volunteers of International Solidarity was conducted in terms of objectives achieved and skills acquired and this approach has begun to be deployed with local staff. These efforts should be continued in 2008 so as to be greatly expanded.

4.2. 2008 Outlook

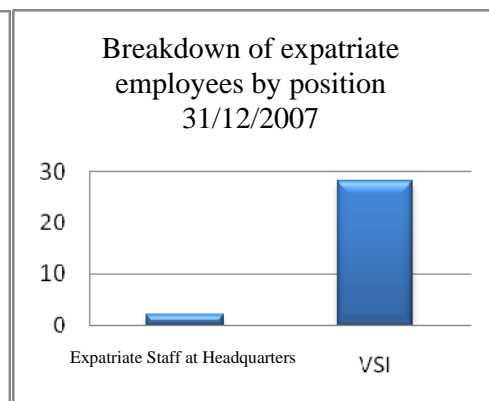
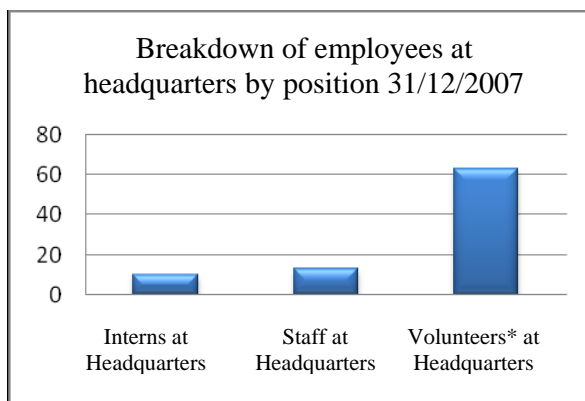
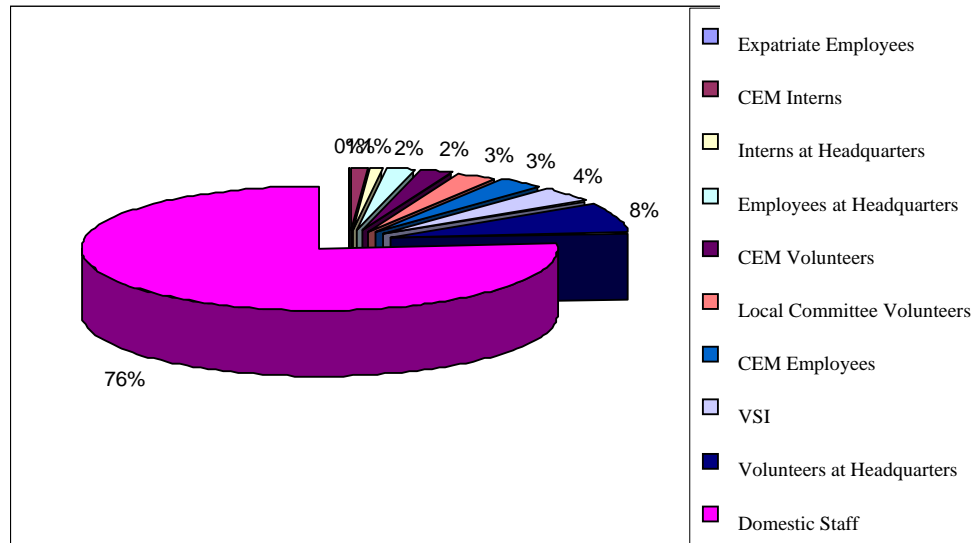
In 2008 work will be carried out to:

- accompany organisational changes on a human level and in particular the establishment of a regional organisation to focus on local management;
- investing more time and skills in the management of local staff to reduce differences in terms of benefits, despite the diversity of laws and practices;



- promote trade and organise the means of staff expression by integrating intercultural aspects;
- develop employment and skills management to meet the survival and development needs for EMDH programs;
- strengthen the training and professional development systems for both the employees and volunteers;
- further develop an HR culture at all levels of the organisation and quality management methods while promoting the harmonisation of practice in an environment rich in its diversity.

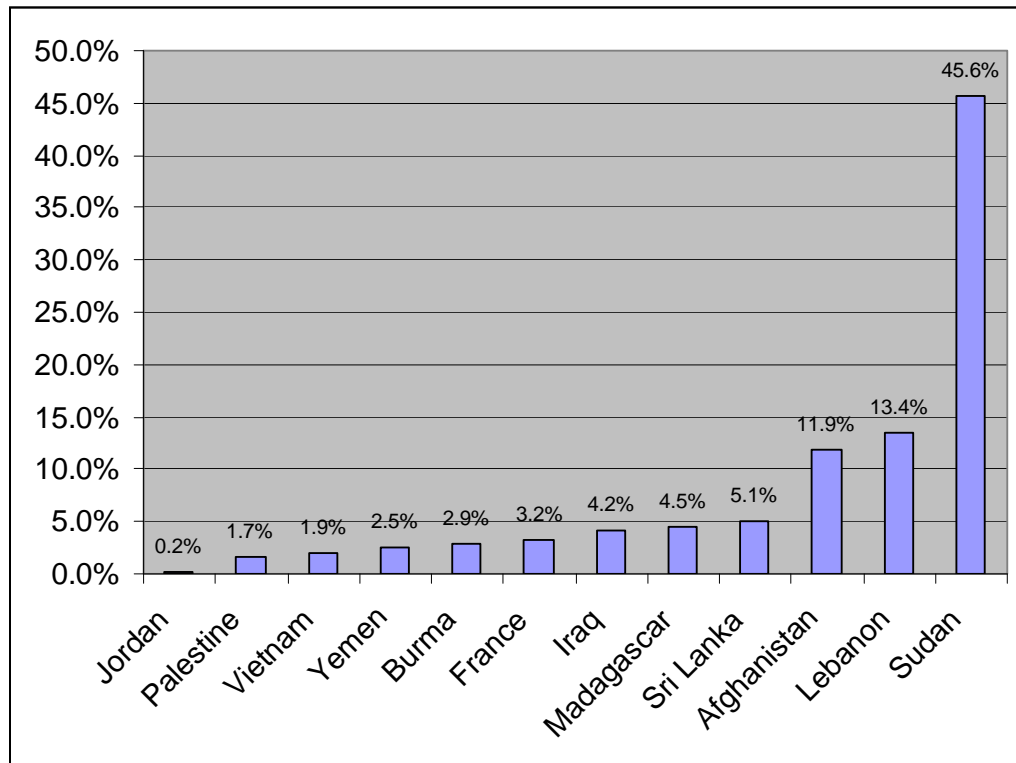
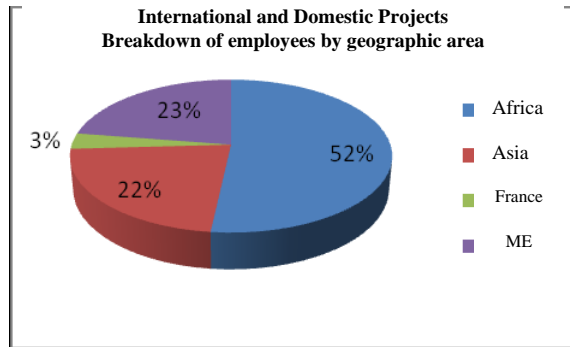
4.3. BREAKDOWN OF EMPLOYEES BY CATEGORY



Domestic staff still represents the largest proportion of EMDH personnel.

The categories are very diverse including many volunteers and interns at the headquarters and a large majority of VSI compared to expatriates.

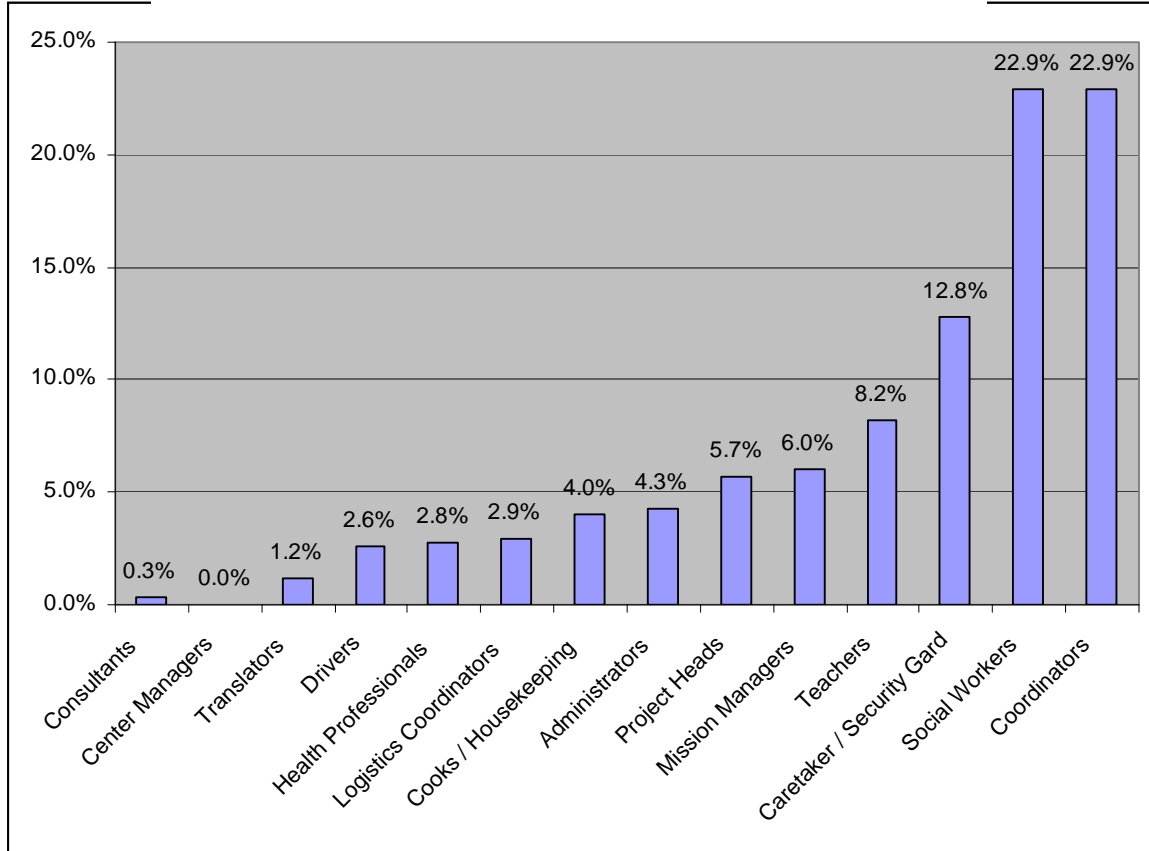
4.4 BREAKDOWN OF EMPLOYEES BY REGION AND COUNTRY



Africa, because of large-scale programs carried out in Sudan, mobilises the largest number of employees. Staff in the Middle East and Asia is the same in each region with 4 intervention countries.

4.5 BREAKDOWN OF EMPLOYEES BY BUSINESS

**Breakdown of EMDH employees by position
(national and international projects)**



The distribution of jobs reflects the type of association intervention build around the awareness of child rights and the implementation of socio-educational projects. Social workers and leaders are the most represented, followed in equal proportions by managers (heads of mission, projects...) and teams related to logistics in general (custodians, cooks...).

5. FINANCIAL REVIEW - YEAR 2007

Background and highlights of the year

2007 was a transitional year between the end of funding many programs covered on multi-year grants and seeking new financing for the continuity of these programs over the coming years.

All programs EMDH were maintained during this year, three missions have been conducted with a view to opening new programs.

During the 2007fiscal year, EMDH reached its goal to honour the equity financing contracted from backers, particularly from public institutional backers.

The report presents the financial position of the association at December 31, 2007.

I - Assets

Fixed Assets

EMDH increase its fixed assets of 45.30% from €146,692.96 to €268,172.20. This increase is primarily due to adjustments in the new headquarters of the association. The assets cover current liabilities.

Assets

EMDH lowered its assets of 51.77%. This decrease is due to the fact that all financial reports were delivered in a timely manner, resulting in payments of program instalments or balances.

II - Liabilities

The association's reserves

With the association's equity, EMDH was able to fully respond to co-financing programs ending in 2007 on the one hand, on the other keep programs in anticipation of new grants thus continuing to benefit the children in the programs established by the association. The association's equity certainly reduced, but the objective vis-à-vis the social missions have been reached. The first priority for 2008 is a search for very active private funds to quickly recover financial autonomy.

Dedicated Funds

The funds dedicated to this exercise are down 49.07% from €979,589.72 to €498,823.06. This decline highlights four important indicators of good management:

- Field programs require cash,
- Cash is sent monthly,
- Regularly paid funds allow the implementation of planned activities,
- Activities are being carried out; financial reports are filed on time.

Debts

The debts are down 30.87% from €119,878.41 to €82,861.60. They are mainly due to invoices had not reached by 31/12/2007 first, and suppliers who contracted agreements at maturity. The social debts are in turn a decrease of 6.67% from €190,685.97 to €178,040.46.

III - Annual fund flow statement:

A budget of €6,575,534 was submitted to the General Assembly on June 16, 2007 as a goal in 2007. At the closing of accounts, revenues have reached € 6,271,825.26, or 95.38% of the target.

The result of 2007 is a deficit of €422,673.59. The shortfall comes from the finalisation of the multi-year plans, 80% of current programs, and is covered by own association funds.

Revenues reach 6,271,825.26 €.
Operating expenses reach 6,765,322.51 €.

a) Program Services

The analysis of the use shows that the association, excluding financial charges and one-offs, remained stable compared to 2006 with an increase of 1.27% from 6,679,375.33 to €6,765,322.51.

Use of EMDH resources is divided into seven parts including three main, this format allows for perfect visibility and traceability of expenditure allocation on the one hand, and meets the required legal and fiscal standards on the other.

1) – Social missions and operational costs

They represent 78.97% of usage against 73.63% in 2006. This account is composed entirely of expenditures on programs including domestic and international staff contributing directly to their implementation. For the sake of transparency, no communication and awareness expenses are included in this account

2) – Fundraising expenses

The fundraising expenses and management of donations amounted to 1.73% of jobs, against 1.47% in 2006. The involvement of a large network of volunteers helps maintain the stability of spending for this position.

3) - Operating expenses

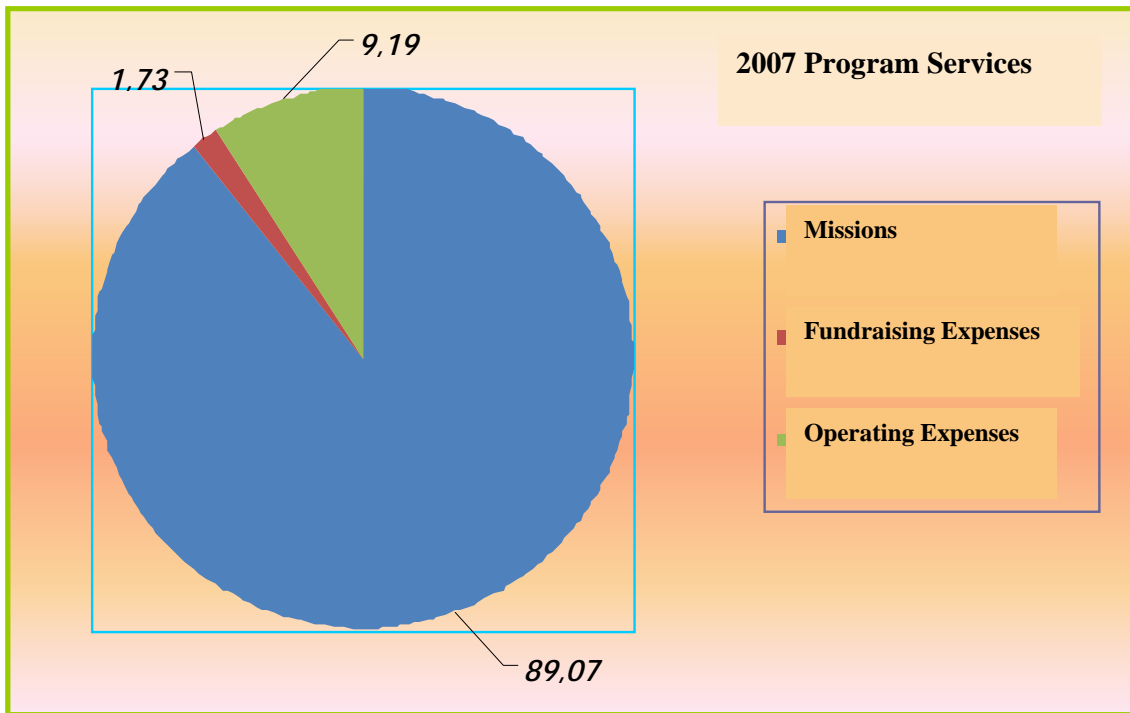
Despite the strengthening and further professionalisation of the support services, these costs continue with an increase of only 1.82% compared to 2006. The analysis of the overall distribution of the association's expenses demonstrates that operating expenses remain below the threshold of 10% with no function, yet vital to the good governance and security operations, assigned to social tasks.

PROGRAM SERVICES	12/31/2007	%	12/31/2006	%
<u>I – SOCIAL MISSIONS AND OPERATING EXPENSES</u>				
- Project expenses (France)	1,270,949.91	18.67	1,305,167.25	19.23
- Project Expenses (Africa) (of which 1 salaried employee in 2007, Darfur provision)	2,143,586.35	31.49	1,821,789.82	26.84
- Project Expenses (Asia) (of which 1 salaried employee in 2007)	915,338.76	13.45	664,598.57	9.79
- Project Expenses (Middle East)	1,035,959.39	15.22	764,024.31	11.26
- Project Expenses (Latin America)	9,368.79	0.14	-	-
- VSI included in the project	525,213.88		441,213.00	6.50
TOTAL OPERATING EXPENSES (I)	5,375,203.20	78.97	4,996,792.95	73.63
<u>II – UNSPENT FUNDS DEDICATED TO OUR WORK</u>				
- Funds dedicated to Projects in France				
- Funds dedicated to Projects in Africa	335,552.25	4.93	392,975.51	5.79
- Funds dedicated to Projects in Asia	37,289.25	0.55	160,541.03	2.37
- Funds dedicated to Projects in Middle East	125,981.56	1.85	394,928.62	5.82
TOTAL UNSPENT FUNDS (II)	498,823.06	7.33	948,445.16	13.98
<u>III – FUNDRAISING EXPENSES</u>				
- Fundraising expenses	101,743.88	1.49	86,217.17	1.27
- Caging	5,062.19	0.07	4,756.76	0.07
- Caging personnel charges	11,143.61	0.16	9,000.00	0.13
TOTAL FUNDRAISING EXPENSES (III)	117,949.68	1.73	99,973.93	1.47
<u>IV – OPERATING EXPENSES</u>				
- Support service to French and International programs	625,716.45	9.19	500,146.07	7.37
TOTAL OPERATING EXPENSES (IV)	625,716.45	9.19	500,146.07	7.37
<u>V – DEPRECIATION AND OTHER ALLOWANCES</u>				
- Funding of depreciation	28,409.12	0.42	21,219.16	0.31
- Allowance for contingencies and charges	1,794.00	0.03	15,579.58	0.23
TOTAL DEPRECIATION AND OTHER ALLOWANCES (V)	30,203.12	0.44	36,798.74	0.54
<u>VI - IMPOSTS AND TAXES</u>	117,427.00	1.73	97,218.48	1.43
TOTAL IMPOSTS AND TAXES (VI)	117,427.00	1.73	97,218.48	1.43
TOTAL OPERATING CHARGES (I+II+III+IV+V+VI)	6,765,322.51	99.39	6,679,375.33	98.42
<u>VII – INVESTMENT CHARGES</u>				
- Bank /cash instruments interests and charges	33,712.71	0.50	707.59	0.01
- Foreign exchange loss	699.73	0.01	2,215.76	0.03
- Service charges on security investment		-	152.45	0.00
TOTAL FINANCING CHARGES (VII)	34,412.44	0.51	3,075.80	0.04
VII – ONE-OFF CHARGES	6,927.09	0.10	32,079.27	0.47
TOTAL ONE-OFF CHARGES (VIII)	6,927.09	0.10	32,079.27	0.47
TOTAL PROGRAM SERVICES	6,806,662.04	100.00	6,714,530.40	98.94
NET EARNINGS (SURPLUS)		-	71,931.02	1.06
PROFIT AND LOSS STATEMENT TOTAL	6,806,662.04	100.00	6,786,461.42	100.00

2007 PROGRAM SERVICES in numbers

2007 Allocation Graph	2007	%	2006	%
Social Missions	6,062,997	89.07	6,186,341	91.16
Fundraising expenses	117,949	1.73	99,974	1.47
Operating expenses	625,716	9.19	500,146	7.37
Other allocations	687,794	10.11	1,189,548	17.53
Operating Subtotal	6,806,662	100.00	6,786,461	100.00

2007 PROGRAM SERVICES Graph



b) - Resources

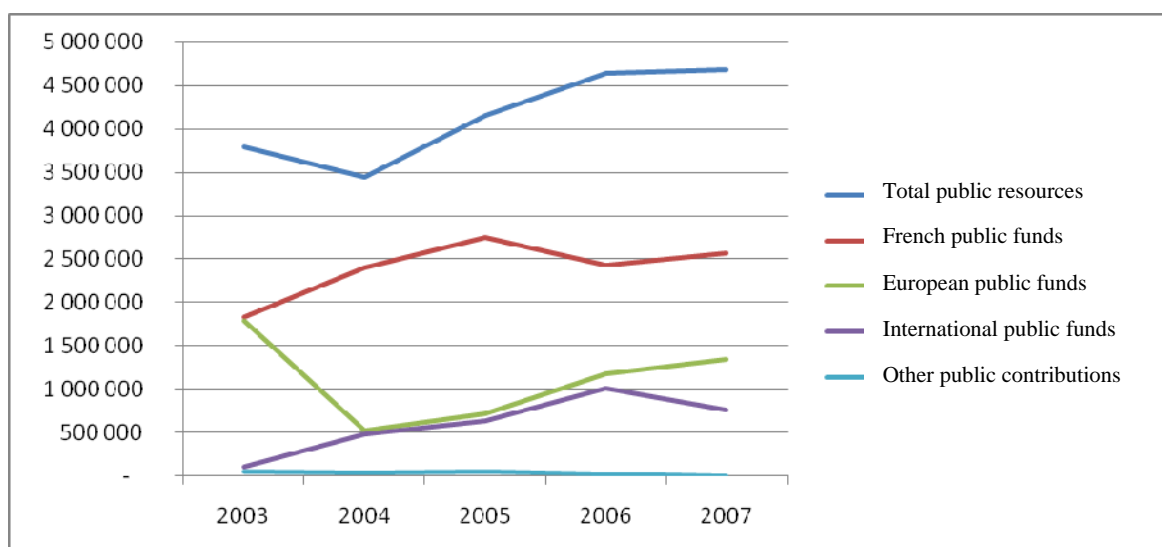
Resources excluding financing and one-offs amount to € 6,271,825.26 against 5,935,317.23 in 2006, an increase of 5.37%. The association demonstrates that its ability to raise money is constantly increasing.

RESOURCES	12/31/2007	%	12/31/2006	
<u>I – FUNDRAISING INCOME</u>				
- Allocated donations	23,795.49	0.35	115,975.60	1.71
- Unallocated donations	148,354.96	2.18	32,923.34	0.49
I - TOTAL FUNDRAISING INCOME	172,150.45	2.53	148,898.94	2.19
<u>II – PATRONAGE AND OTHER PRIVATE CONTRIBUTIONS</u>				
- Local private grants	137,577.05	2.02	19,335.67	0.28
- Other private grants	714,595.80	10.50	107,020.03	1.58
- Endowment	15,000.00	0.22	57,720.00	
- Other NGOs			491,261.87	
II - TOTAL PATRONAGE AND OTHER PRIVATE CONTRIBUTIONS	867,172.85	12.74	675,337.57	1.86
<u>III – OTHER INCOME ALLOCATED TO MISSIONS</u>				
- Loans from Services			273.00	0.00
- Sales	2,427.50	0.04	11,787.72	0.17
- Subscriptions			20.00	0.00
III - TOTAL OTHER INCOME ALLOCATED TO MISSIONS	2,427.50	0.04	12,080.72	0.18
<u>IV – GRANTS AND OTHER PUBLIC CONTRIBUTIONS</u>				
- French Public Funds	2,568,641.30	37.74	2,422,136.34	35.69
- European Public Funds	1,349,832.69	19.83	1,182,833.26	17.43
- International Public Funds	764,665.86	11.23	1,015,428.02	14.96
- Other Public Assistance Agencies employed	793.80	0.01	19,878.75	0.29
IV - TOTAL GRANTS AND OTHER PUBLIC CONTRIBUTIONS	4,683,933.65	68.81	4,640,276.37	68.38
<u>V – OTHER UNSPENT MISSION INCOME</u>				
- Contributions	5,348.00	0.08	4,521.00	0.07
- Other internal re-invoicing income	536,120.85	7.88	457,443.54	6.74
V - TOTAL OTHER UNSPENT INCOME	541,468.85	7.95	461,964.54	6.81
TRANSFER OF OPERATION CHARGES RISKS AND CHARGES UNDERTAKEN	4,671.96	0.07	4,199.09	
			- 7,440.00	-0.11
TOTAL OPERATING INCOME (I+II+IV+V)	6,271,825.26	92.14	5 935 317,23	87.46
<u>VI – FINANCING INCOME</u>				
- Bank interests and income	519.00	0.01		
- Foreign exchange gain	27,869.22	0.41	15,577.33	0.23
- Securities investment net income			1,963.37	0.03
	28,388.22	0.42	17,540.70	0.26
VIII – ONE-OFFS INCOME	44,279.03	0.65	60,863.23	0.90
	44,279.03	0.65	60,863.23	0.90
VIII – RECOVERY FUNDS DEDICATED TO PROGRAMS	39,495.94	0.58	772,740.26	11.39
RESOURCES TOTAL	6,383,988.45	93.79	6,786,461.42	100.00
NET EARNINGS (DEFICIT)	422,673.59	6.21		
PROFIT AND LOSS TOTAL	6,806,662.04	100.00	6,786,461.42	100.00

1) - Government grants

Government grants amounted to € 4,683,933.65, representing 68.81% of our total resources. They are stable compared to 2006 recording a marginal increase of 0.94%.

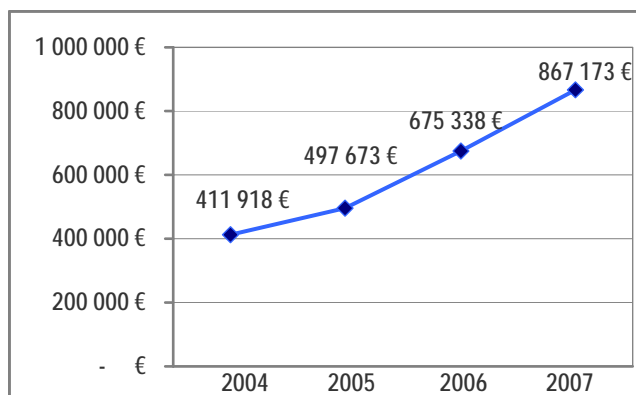
	2003	2004	2005	2006	2007
French public funds	€1,837,787	€2,395,161	€2,744,010	€2,422,136	€2,568,641
European public funds	€1,791,234	€531,909	€724,145	€1,182,833	€1,349,833
International public funds	€104,960	€481,790	€638,026	€1,015,428	€764,666
Other public contributions	€49,319	€31,920	€48,232	€19,879	€794
Total public resources	€3,783,300	€3,440,780	€4,154,413	€4,640,276	€4,683,934



EVOLUTION OF PUBLIC FUNDS ORIGIN

2) - Private Grants

Private grants amounted to €867,172.85, representing 12.74% of our total resources. This was a significant increase of 22.12% compared to 2006. This trend has continued for several years and reflects the association's ability to increase its own resources to maintain its independence in relation to public funders and to ensure a co-financing policy with institutional funders.



EVOLUTION OF PRIVATE FUNDS 2004 - 2007

3) – Fundraising income

Fundraising income amounted to €172,151.45, representing 2.53% of our total resources. This is an increase of 13.51% compared to 2006. This funding category should grow. It should be noted that the combination of private grants and fundraising income is €1,039,324.30 or 15.27% of total resources of the structure, demonstrating the association's ability to provide more than 15% of equity to its public and private financing. This share is constantly increasing.

4) - Other income

These include contributions, sales, financing, and one-offs, they represent overall €621,235.56 or 9.13% of total resources.

2007 RESOURCES	2007	%	2006	%
Fundraising income	172,150	2.53	148,899	2.19
Private grant income	867,173	12.74	675,338	9.95
Public grant income	4,683,934	68.81	4,640,276	68.38
Securities investment	1,083,405	15.92	1,321,949	19.48
Operating subtotal	6,806,662	100.00	6,786,461	100.00

2007 Resources graph

